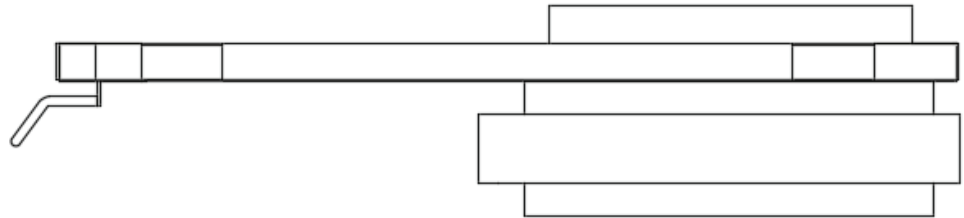


# Chute Fire Certification

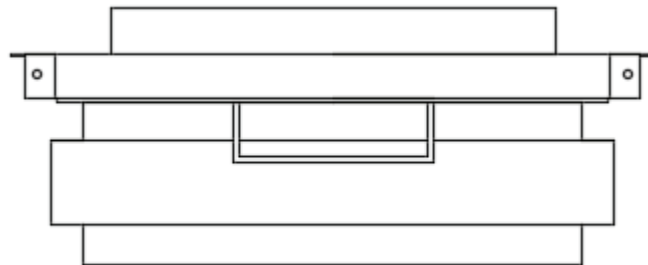
## The High Performance Chute Safe Protection System with 4 Hour Fire Rated Damper



The Chute Safe Protection System is designed to protect all types of refuse and laundry chutes fitted to high rise buildings or buildings where shafts are used for the transport of refuse/laundry to a set location.

The Chute Safe Protection System provides a 4 hour fire rated fusible link fire damper with a heavy duty shut off hatch to protect maintenance persons working below the chute.

This bespoke system can be manufactured to fit all sizes of chutes and is built so that the fire damper can be replaced in future if required without removing the main Chute-Safe hatch unit. The damper is designed to have the shutter blades out side the air flow and has a protective cover to prevent refuse or laundry from catching or damaging the link.



The Chute Hatch Door is manufactured from heavy grade steel 2.5mm thick with internal supports and the body of the unit is 3mm or 5mm thick steel and is removable so it can be re-placed if in any reason it has become compromised/damaged. Each unit is supplied with 450mm spigots round and square which are 5mm under sized so the chute ductwork will fit over the spigots. The units are then riveted or tech screwed to the chute ductwork.

The unit is finished in an exterior Signal Red (RAL3001) finish. The hatch slides to close and provides protection from objects falling through the chute. This heavy duty unit is offered with 12 months warranty and is made to order to the specific requirements of the site application.

### Features:-

- Tested for 10,000 operation
- Powder coated finish
- 12 months warranty
- Manufactured from heavy grade mild steel
- 4 hour fire rated fusible link fire damper
- Fire Damper is CE marked & Certified to E240 fire rating

**Please call 0333 577 1108 or email [sales@firecertificationuk.co.uk](mailto:sales@firecertificationuk.co.uk) today to discuss your fire risk assessment requirements.**

• Chute Safe Protection System

• Certified to EN 15650

• Fire Tested to BS EN13501

• Welded Construction

• Third Party Certified

• Simple to Install

• Conforms to ISO 834

• Fast Delivery on standard sizes

• Made in the EU



Fire Protection Association  
MEMBER 2018

